



An ISO 9001 Registered Company

FITCO®

Hydraulic Seals



Sealing Solutions

Contents

Introduction & Seal Guide
Sealing Applications
Range of Seals
Material Properties
Hydraulic Seal Kits
Standard Sizes

Introduction

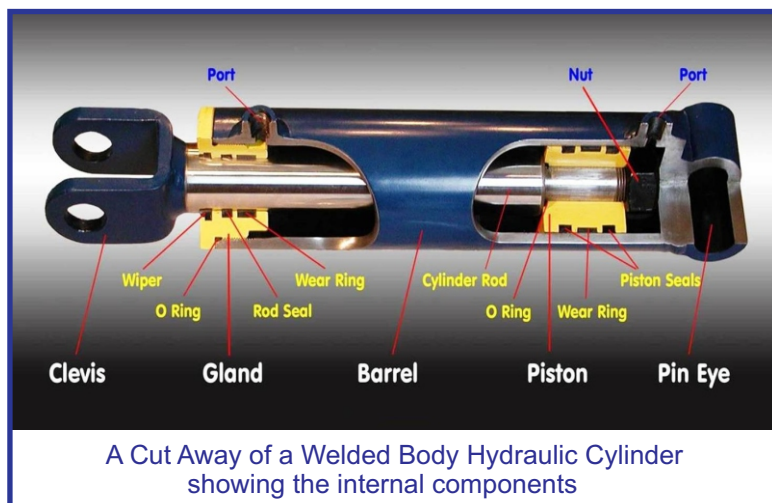
Fitco hydraulic sealing products provides the wide range of products to perform the sealing functions in all types of hydraulic equipments for dynamic reciprocating, oscillating or very slow rotational motion and which are based on the design, function and service life of hydraulic and pneumatic cylinders and systems.

Fitco sealing elements are used where there is leakage, resistance to wear and gap extrusion, resistance to process media, resistance to high and low temperatures, low friction, compact form and simple installation are demanded for the requirements of industry for a functional sealing solution.



Fitco Seal Selection Guide

Fitco provides seals for your requirement usually for the rod, ram, gland or piston, seals are of numerous profiles and sizes depending on their application as required for performance



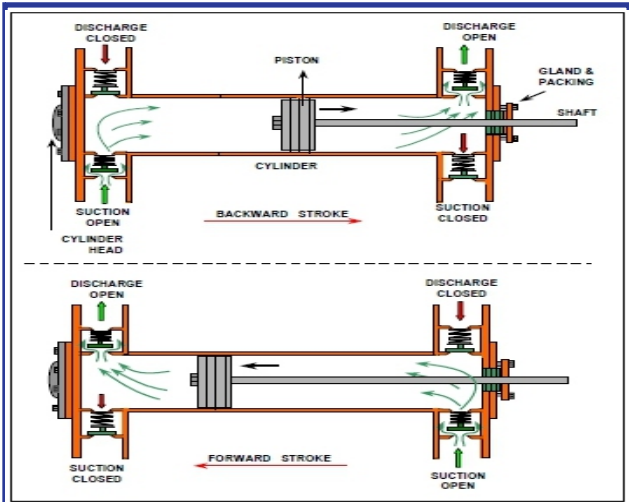
Fitco Product Range

- Piston Seals** - prevent leakage from one side to other, seals between the reciprocating piston and cylinder bore.
- Rod/Gland Seals** - prevent leakage from the rod end, seal around the reciprocating rod or ram.
- Wipers/Scrapers** - stop external contaminants from being drawn inside with the rod, such as dust, dirt or water.
- Wear Rings** - provided support to the piston or ram under lateral loads.
- O Rings** - prevent leakage from joints between the barrel & end joints also used as static seal.

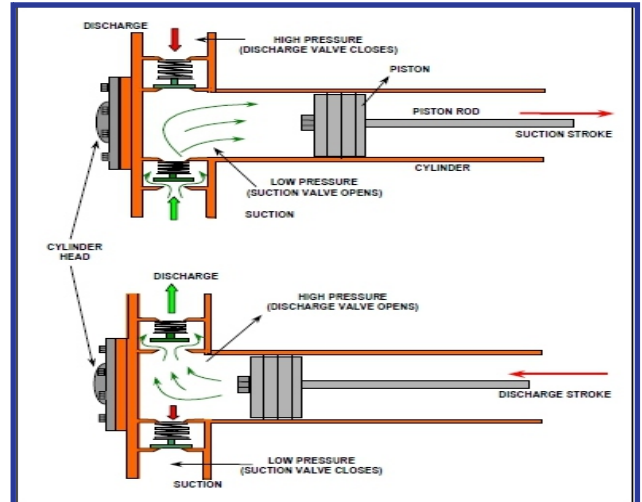
Fitco Seals are used in hydraulic & pneumatic application. Seals in hydraulic applications play an important function in hydraulic cylinder which convert fluid power into mechanical powers, are also known as RAMS or JACKS, they are used at high pressure and produce large forces and precise movement.

In pneumatic application seals are used preventing leakage from gas/liquid as it is an expansive substance, it is dangerous to use at high pressure, as they limit to about 10 bar pressure, because gas / liquid is compressible substance, the motion of pneumatic cylinder is hard to control precisely. The basic theory for hydraulic & pneumatic cylinder is otherwise the same.

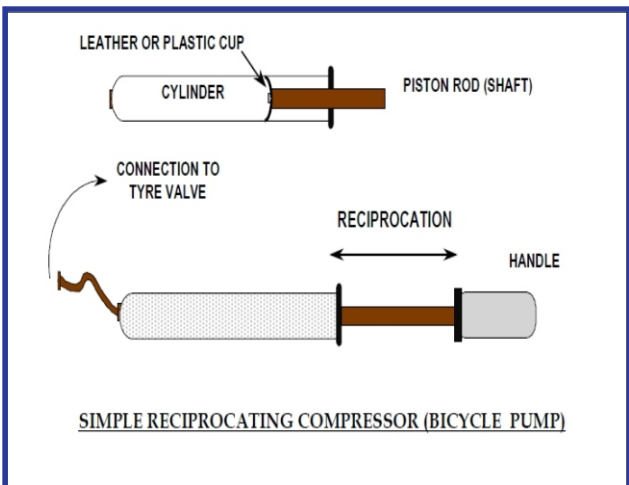
Different Applications



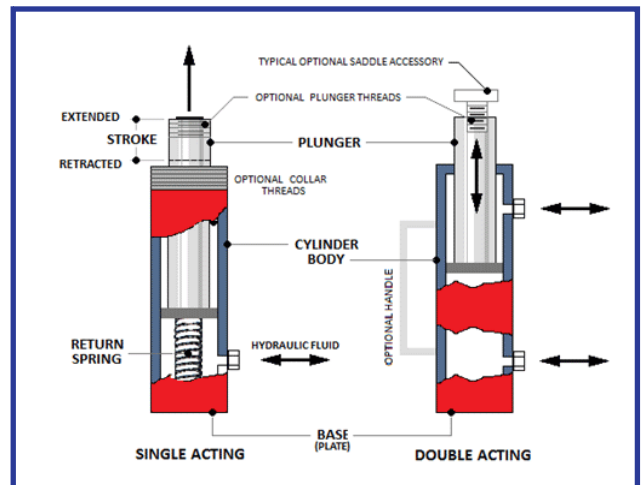
Double Acting Reciprocating Cylinder



Single Acting Reciprocating Cylinder



Reciprocating (Piston) Pump



Telescopic Jack Cylinder

Figures shown above are some of the sealing applications

To order or get further details Email: sales@fitcoseals.com or Visit us www.fitcoseals.com

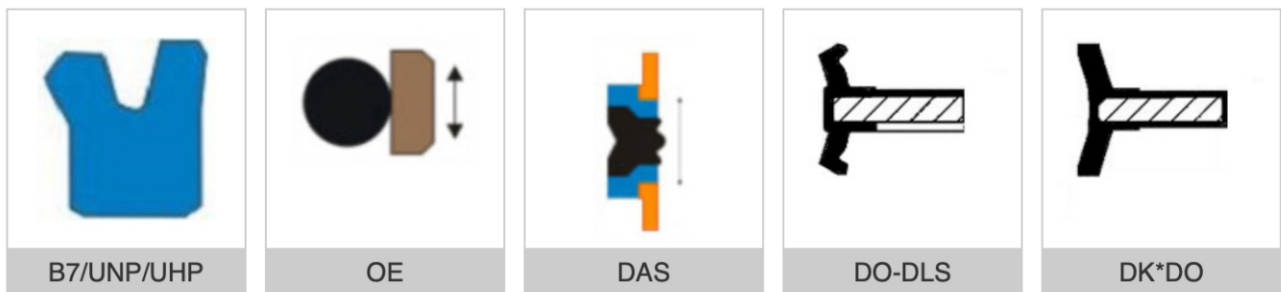


Profile - Range of Seals **FITCO**®

Piston/Rod Seals



Piston Seals



Rod Seals



To order or get further details Email: sales@fitcoseals.com or Visit us www.fitcoseals.com



Profile - Range of Seals **FITCO**®

Wiper/Scraper Seals



DHS



AY



A1/GHP



A5/J



UW2



LBH



AH/DKB



AF



MC



AM

Wear Rings



F3/Bronze*GS



FC/Phenolic*GS



Phenolic*GR



PTFE/Bronze*GR



POM*GR



Polyester/PTFE*GR

Pneumatic Seals



EU



PP



E4

To order or get further details Email:sales@fitcoseals.com or Visit us www.fitcoseals.com



Nitrile Butadine Rubber (NBR)

Hardness 70 Shore A & 90 Shore A ,Color: Black

Working Temperature Range: -40° C to+ 100° C

Nitrile Rubber is general purpose elastomer for Hydraulic and Pneumatic systems and used as seal energizer for low pressure applications such as pneumatic, it has excellent resistance to mineral oil, greases, water, hydro-carban fuels, compression set resistance and good elastic properties, it is not suitable to automotive brakes fluid.

Fluorinated Rubber FKM (Viton)

Hardness 70 Shore A ,Color: Geryish Black/ Brown

Working Temperature Range: -30° C to+ 220° C

Viton Rubber is excellent resistance to mineral oils, hot water, steam, fuels, alcohol, hot oils, aliphatic and aromatic hydrocarbon, it has poor resistance to methanol, ketones & esters also exhibits excellent chemical resistance for use in harsh environments such as phosphate esters.

Silicon Rubber (VQM)

Hardness 70 Shore A ,Color:Orange

Working Temperature Range: -60° C to+ 200° C

Silicon Rubber has great cold flexibility as well as high thermal resistance. It has excellent de-electric properties and very good resistance to attack by oxygen, ozone and sunlight. It has poor strength & tear resistance to mineral oils.

Ethylene Propylene Rubber (EPM /EPDM)

Hardness 70 Shore A ,Color: Black

Working Temperature Range: -45° C to +150° C

EPDM has good resistance to ozone ageing and weathering, water and steam, Dilute acid, alkalies ketones, alcohol, fire retardent hydraulic fluids and hydraulic brakes fluids. This elastomer must not come in contact with mineral oils and greases.

Poly-chloroprene Rubber (CR)

Hardness 70 Shore A ,Color: Black

Working Temperature Range: -20° C to+ 100° C

CR chief characteristics is flame retardancy, excellent ageing properties in ozone and weather environments along with resistance to abrasion and flex fatigue. It is good resistance to mineral oils with high aniline point, greases refrigerants and water.

Polyurethane (P.U)

Hardness 80 Shore A ,Color: Blue

Working Temperature Range: -30° C to + 110° C

PU is premium polyurethane for superior sealing performance for use in general hydraulic applications (Not suitable for hot water), it has excellent mechanical properties such as high tensile strength, abrasion resistance, tear strength, and extrusion resistances.

PTFE /VIRGIN

Color: White

Working Temperature Range: -195° C to+ 250° C

Used mainly for o-rings, backup rings and machined parts used in special applications requiring chemical inertness and limited strength. Ideal for use in cryogenic applications

PTFE/ Bronze filled PTFE (BFT)

Color: Bronze

Working Temperature Range: -195° C to +250° C

Used in dynamic sealing applications where the bronze filler gives improved wear resistance, hardness and compressive strength. The electrical properties and chemical resistance are reduced. Molybdenum disulphide improves the self lubrication



Seals for all Industries **FITCO®**

Automotive Industry Applications

The demands for the automotive industry are very typical and depend on the application (motor cooling or heating systems - fuel systems, etc). Fitco has some Special compounds.

Pharmaceutical, Analytical & Biotechnical Applications

Sealing and technical components used in the Biotechnology industry are used in a wide range of applications. Laboratory and analytical equipment sealing products include gaskets and miniature components. Drug discovery and genetic research techniques often employ aggressive chemical environments that also demand ultra-high purity sealing components. Pharmaceutical applications range from drug discovery to development and full production of a wide range of chemical, biological and radiological products.

Chemical & Petrochemical Industry Applications

Applications in the Chemical and Petrochemical Industry are sometimes critical. Next to the broad chemical resistance is also the low and high temperature resistance of great importance. Fitco has 20 years of experience in this field.

Food & Beverage Industry Applications

One of the largest applications for specialty elastomers and plastics is in Food Processing and Beverage Equipment. These seals are required to resist the chemical and thermal environments present in the equipment, while not releasing any unwanted or unknown contaminants into the process. Many applications require the sealing materials to be 'capable of being cleaned and receiving effective bactericidal treatment while still maintaining physical properties'.

Oil & Gas Industry Applications

Applications in the Oil & Gas Industry range from seals and components involved in exploration and drilling to high-pressure / high-temperature sealing components in down-hole wells. Extreme temperatures and pressures place great demands on elastomers for this industry. In addition, many chemicals either experienced in the reservoir, or used in the drilling, completion or intervention process can degrade many common elastomers.

Semiconductor Industry Applications

Applications in the Semiconductor Industry range from seals and components for process equipment used in the fabrication of integrated circuits or semiconductors.

Potable Water Industry Applications

Elastomers and plastics used in potable water treatment facilities as well as distribution and dispensing equipment may be subject to many demands. Chlorine has long been used in a disinfectant in water systems, but they can react and form toxic disinfectant byproducts (DBP). Ammonia is often added to reduce the DBP - which react to form chloramines which can be damaging to some elastomers.

Heavy Earthmoving & Construction Machinery

Application for Earthmoving machinery range from seals for Cylinder, pumps, valves used in Excavators, Forklifts Trucks, WheelLoaders & Bulldozer.

To order or get further details Email:sales@fitcoseals.com or Visit us www.fitcoseals.com



Hydraulic Seal Kits **FITCO®**

Hydraulic Cylinder Repair Kits

Our Hydraulic Cylinder Seals & Seal Kits are suitable for use in most brands and models of Construction, Earth-Moving and Material Handling machinery.

We are in a position to provide replacement seal kits against OEM part nos (for reference purpose only) for popular machine models like -jcb, komatsu, hitachi, caterpillar, ...!!



Types of Machines

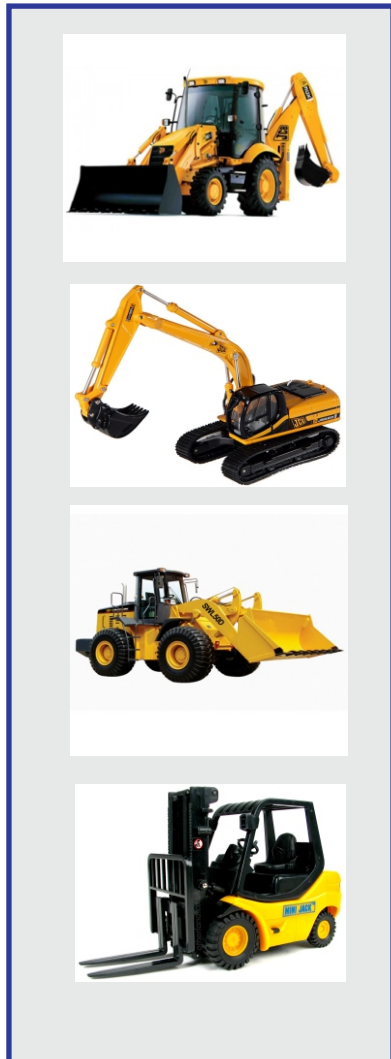
- Excavator (wheel type)
- Excavator (crawler type)
- Loader (wheel type)
- Forklift

Models of Cylinder Repair Kits

- Boom Cylinder Kit
- Control Valve Kit
- Assist Valve Kit
- Gear Pump Kit
- Track Motor Kit
- Arm Cylinder Kit
- Bucket Cylinder Kit
- Swivel Joint Kit
- Swing Motor Kit
- Main Motor Kit

Brands of Machine Type

- BEML
- Escorts
- Samsung
- Demag
- Mitsubishi
- Caterpillar
- L&T Komatsu
- Daewoo
- Hitachi
- Hyundai



These are some of the seal kits mentioned above, we also manufacture as per customer's designs and specifications.

To order or get further details Email:sales@fitcoseals.com or Visit us www.fitcoseals.com



UHS/UNS

Piston/Rod Seals

FITCO®

UHS/UNS		
ID	OD	TH
4.00	10.00	4.00
5.00	12.00	5.00
5.00	12.00	6.00
5.00	15.00	6.00
6.00	12.00	5.00
6.00	14.00	6.00
6.00	15.00	6.00
6.00	15.00	8.00
6.00	18.00	8.00
8.00	14.00	6.00
8.00	15.00	6.00
8.00	15.00	8.00
8.00	18.00	8.00
10.00	16.00	4.00
10.00	16.00	5.00
10.00	18.00	5.00
10.00	18.00	6.00
10.00	20.00	6.00
10.00	20.00	8.00
11.20	19.20	5.00
12.00	16.00	5.00
12.00	16.00	6.00
12.00	18.00	5.00
12.00	18.00	6.00
12.00	19.00	5.00
12.00	20.00	5.00
12.00	20.00	6.00
12.00	22.00	5.00
12.00	22.00	7.00
12.00	22.00	8.00

UHS/UNS		
ID	OD	TH
12.00	24.00	6.00
12.00	25.00	8.00
12.50	20.00	5.00
14.00	22.00	5.00
14.00	22.00	6.00
14.00	24.00	8.00
15.00	22.00	5.00
15.00	22.00	6.00
15.00	23.00	5.00
15.00	25.00	5.00
15.00	25.00	7.00
15.00	25.00	8.00
15.00	28.00	10.00
16.00	22.00	5.00
16.00	22.00	6.00
16.00	22.00	7.00
16.00	22.00	8.00
16.00	24.00	5.00
16.00	24.00	6.00
16.00	24.00	8.00
16.00	25.00	5.00
16.00	26.00	5.00
16.00	26.00	6.00
16.00	26.00	8.00
16.00	28.00	8.00
17.00	27.00	5.00
18.00	24.00	5.00
18.00	24.00	8.00
18.00	25.00	5.00
18.00	25.00	6.00

These are some of the profiles mentioned above, we also manufacture as per customer's designs and specifications.

To order or get further details Email:sales@fitcoseals.com or Visit us www.fitcoseals.com



UHS/UNS

Piston/Rod Seals

FITCO®

UHS/UNS		
ID	OD	TH
18.00	26.00	5.00
18.00	26.00	6.00
18.00	28.00	6.00
18.00	28.00	8.00
18.00	30.00	8.00
18.00	32.00	8.00
19.00	24.00	5.00
19.00	25.00	5.00
19.00	25.00	6.00
19.00	26.00	5.00
19.00	26.00	6.70
19.00	32.00	8.00
20.00	26.00	3.50
20.00	26.00	5.00
20.00	26.00	6.00
20.00	26.00	7.00
20.00	27.00	6.00
20.00	28.00	5.00
20.00	28.00	6.00
20.00	28.00	7.00
20.00	28.00	8.00
20.00	30.00	5.00
20.00	30.00	6.00
20.00	30.00	8.00
20.00	30.00	10.00
20.00	32.00	5.00
20.00	32.00	6.00
20.00	32.00	8.00
20.00	35.00	10.00
21.00	26.50	6.00

UHS/UNS		
ID	OD	TH
22.00	28.00	5.00
22.00	28.00	6.00
22.00	30.00	5.00
22.00	30.00	5.80
22.00	30.00	6.00
22.00	30.00	8.00
22.00	32.00	5.00
22.00	32.00	6.00
22.00	32.00	7.00
22.00	32.00	8.00
22.00	32.00	10.00
22.00	35.00	6.00
22.40	30.00	5.00
22.40	32.40	8.00
23.50	31.50	5.00
24.00	40.00	8.00
25.00	32.00	6.00
25.00	32.00	8.00
25.00	33.00	5.00
25.00	33.00	5.50
25.00	33.00	6.00
25.00	33.00	7.00
25.00	33.00	8.00
25.00	35.00	5.00
25.00	35.00	6.00
25.00	35.00	7.00
25.00	35.00	8.00
25.00	35.00	10.00
25.00	38.00	7.00
25.00	38.00	10.00

These are some of the profiles mentioned above, we also manufacture as per customer's designs and specifications.

To order or get further details Email:sales@fitcoseals.com or Visit us www.fitcoseals.com



Piston/Rod Seals

FITCO®

UHS/UNS

UHS/UNS		
ID	OD	TH
25.00	38.00	7.00
25.00	38.00	10.00
25.00	40.00	8.00
25.00	40.00	10.00
25.00	45.00	10.00
25.00	48.00	10.00
26.00	36.00	5.00
28.00	34.00	5.00
28.00	35.00	5.00
28.00	35.00	6.00
28.00	35.00	10.00
28.00	35.50	5.00
28.00	36.00	6.00
28.00	36.00	7.00
28.00	36.00	8.00
28.00	38.00	7.00
28.00	38.00	7.30
28.00	38.00	8.00
28.00	38.00	10.00
28.00	40.00	8.00
28.00	40.00	10.00
30.00	38.00	5.00
30.00	38.00	6.00
30.00	38.00	7.00
30.00	38.00	8.00
30.00	40.00	5.00
30.00	40.00	6.00
30.00	40.00	7.00
30.00	40.00	8.00
30.00	40.00	10.00

UHS/UNS		
ID	OD	TH
30.00	42.00	8.00
30.00	42.00	10.20
30.00	45.00	7.00
30.00	45.00	10.00
30.00	50.00	10.00
31.50	41.50	6.00
32.00	40.00	4.00
32.00	40.00	6.00
32.00	40.00	7.00
32.00	40.00	8.00
32.00	40.00	10.00
32.00	42.00	6.00
32.00	42.00	7.00
32.00	42.00	8.00
32.00	42.00	10.00
32.00	45.00	6.00
32.00	45.00	8.00
32.00	45.00	10.00
32.00	47.00	8.00
32.00	48.00	8.00
32.00	48.00	10.00
35.00	42.00	6.00
35.00	42.00	7.00
35.00	42.00	8.00
35.00	43.00	5.00
35.00	43.00	6.00
35.00	43.00	6.30
35.00	43.00	7.00
35.00	43.00	8.00
35.00	45.00	6.00

These are some of the profiles mentioned above, we also manufacture as per customer's designs and specifications.

To order or get further details Email:sales@fitcoseals.com or Visit us www.fitcoseals.com



UHS/UNS

Piston/Rod Seals

FITCO®

UHS/UNS		
ID	OD	TH
35.00	45.00	7.00
35.00	45.00	8.00
35.00	45.00	10.00
35.00	48.00	8.00
35.00	48.00	10.00
35.00	50.00	9.00
35.00	50.00	10.00
35.00	50.00	11.50
35.00	50.00	12.00
35.50	45.00	6.00
36.00	46.00	9.00
37.00	47.00	7.00
38.00	44.00	5.00
38.00	46.00	6.00
38.00	48.00	6.00
38.00	48.00	8.00
38.00	48.00	10.00
38.00	50.00	9.00
38.00	50.00	10.00
38.00	55.00	10.00
38.00	58.00	10.00
40.00	48.00	6.00
40.00	50.00	6.00
40.00	50.00	6.50
40.00	50.00	7.00
40.00	50.00	7.30
40.00	50.00	8.00
40.00	50.00	10.00
40.00	52.00	10.00
40.00	55.00	8.00

UHS/UNS		
ID	OD	TH
40.00	55.00	10.00
40.00	60.00	10.00
42.00	52.00	10.00
43.00	63.00	10.00
45.00	53.00	8.00
45.00	35.00	6.00
45.00	55.00	6.50
45.00	35.00	7.00
45.00	35.00	7.30
45.00	55.00	8.00
45.00	55.00	10.00
45.00	56.00	7.00
45.00	10.20	12.50
45.00	60.00	12.50
45.00	62.00	13.00
45.00	63.00	10.00
45.00	63.00	12.00
45.00	65.00	6.00
45.00	65.00	10.00
45.00	65.00	12.00
47.00	57.00	6.00
47.00	57.00	9.00
48.00	58.00	6.00
48.00	58.00	7.00
48.00	63.00	11.50
50.00	60.00	6.00
50.00	60.00	7.00
50.00	60.00	8.00
50.00	60.00	10.00
50.00	60.00	11.00

These are some of the profiles mentioned above, we also manufacture as per customer's designs and specifications.

To order or get further details Email:sales@fitcoseals.com or Visit us www.fitcoseals.com



UHS/UNS

Piston/Rod Seals

FITCO®

UHS/UNS		
ID	OD	TH
50.00	60.00	12.00
50.00	63.00	6.00
50.00	63.00	6.50
50.00	63.00	7.00
50.00	63.00	8.00
50.00	63.00	10.00
50.00	65.00	10.00
50.00	65.00	12.00
50.00	70.00	10.00
50.00	70.00	12.00
50.00	75.00	10.00
52.00	62.00	12.00
53.00	63.00	6.00
53.00	63.00	6.50
53.00	63.00	8.00
53.00	63.00	10.00
55.00	65.00	5.00
55.00	65.00	6.00
55.00	65.00	6.50
55.00	65.00	8.00
55.00	65.00	10.00
55.00	65.00	12.00
55.00	68.00	10.00
55.00	70.00	10.00
55.00	70.00	12.00
55.00	75.00	10.00
55.00	75.00	12.00
56.00	78.00	7.00
56.00	66.00	6.00
57.00	65.00	5.00

UHS/UNS		
ID	OD	TH
58.00	68.00	6.00
60.00	70.00	6.00
60.00	70.00	7.00
60.00	70.00	8.00
60.00	70.00	10.00
60.00	70.00	12.00
60.00	71.00	7.00
60.00	75.00	9.00
60.00	75.00	10.00
60.00	75.00	12.00
60.00	80.00	10.00
60.00	80.00	12.00
61.00	71.00	6.00
62.00	82.00	12.00
63.00	73.00	6.00
63.00	73.00	8.00
63.00	73.00	10.00
63.00	73.00	12.00
63.00	75.00	10.00
63.00	78.00	10.00
63.00	78.00	12.00
65.00	75.00	8.00
65.00	75.00	8.00
65.00	75.00	10.00
65.00	75.00	12.00
65.00	78.00	10.00
65.00	78.00	12.00
65.00	78.00	12.50
65.00	80.00	8.00
65.00	80.00	9.00

These are some of the profiles mentioned above, we also manufacture as per customer's designs and specifications.

To order or get further details Email:sales@fitcoseals.com or Visit us www.fitcoseals.com



UHS/UNS

Piston/Rod Seals

FITCO®

UHS/UNS		
ID	OD	TH
65.00	80.00	10.00
65.00	80.00	11.00
65.00	80.00	12.00
65.00	85.00	10.00
65.00	85.00	12.00
65.00	90.00	15.00
66.00	76.00	6.00
67.00	77.00	6.00
70.00	78.00	8.00
70.00	80.00	6.00
70.00	80.00	6.50
70.00	80.00	8.00
70.00	80.00	9.00
70.00	80.00	10.00
70.00	80.00	12.00
70.00	83.00	10.00
70.00	85.00	10.00
70.00	85.00	12.00
70.00	90.00	10.00
70.00	90.00	12.00
70.00	95.00	12.00
71.00	80.00	6.00
72.00	85.00	10.00
75.00	85.00	6.00
75.00	90.00	10.00
75.00	90.00	12.00
75.00	95.00	10.00
75.00	95.00	12.00
75.00	100.00	12.00
76.00	86.00	6.00

UHS/UNS		
ID	OD	TH
80.00	90.00	6.50
80.00	90.00	7.00
80.00	90.00	8.00
80.00	90.00	10.00
80.00	90.00	12.00
80.00	93.00	10.00
80.00	93.00	12.00
80.00	95.00	9.00
80.00	95.00	10.00
80.00	95.00	12.00
80.00	100.00	10.00
80.00	100.00	12.00
80.00	100.00	15.00
80.00	110.00	15.00
83.50	93.50	6.00
85.00	95.00	6.00
85.00	95.00	7.00
85.00	95.00	10.00
85.00	95.00	12.00
85.00	100.00	9.00
85.00	100.00	10.00
85.00	100.00	12.00
85.00	105.00	10.00
85.00	105.00	12.00
85.00	105.00	16.00
86.00	96.00	6.00
88.00	98.00	6.00
90.00	100.00	8.00
90.00	100.00	10.00
90.00	100.00	12.00

These are some of the profiles mentioned above, we also manufacture as per customer's designs and specifications.

To order or get further details Email:sales@fitcoseals.com or Visit us www.fitcoseals.com



UHS/UNS

Piston/Rod Seals

FITCO®

UHS/UNS		
ID	OD	TH
90.00	105.00	9.00
90.00	105.00	12.00
90.00	110.00	12.00
90.00	110.00	13.00
90.00	110.00	15.00
90.00	115.00	9.00
90.00	115.00	12.00
90.00	115.00	15.00
95.00	110.00	9.00
95.00	110.00	12.00
95.00	110.00	12.00
98.00	112.00	9.00
100.00	112.00	9.00
100.00	115.00	9.00
100.00	115.00	12.00
100.00	115.00	15.00
100.00	120.00	12.00
100.00	120.00	15.00
100.00	125.00	9.00
100.00	125.00	12.00
100.00	125.00	15.00
105.00	120.00	9.00
105.00	125.00	12.00
106.00	120.00	8.50
110.00	125.00	9.00
110.00	125.00	12.00
110.00	130.00	15.00
112.00	125.00	9.00
115.00	130.00	9.00
115.00	140.00	15.00

UHS/UNS		
ID	OD	TH
120.00	135.00	9.00
120.00	140.00	12.00
120.00	140.00	15.00
120.00	150.00	15.00
122.00	135.00	9.00
125.00	140.00	9.00
125.00	145.00	12.00
125.00	145.00	15.00
125.00	150.00	15.00
130.00	145.00	9.00
130.00	145.00	9.00
130.00	150.00	15.00
135.00	150.00	9.00
135.00	150.00	12.00
135.00	150.00	15.00
135.00	160.00	18.00
135.00	165.00	15.00
136.00	150.00	9.00
140.00	155.00	9.00
140.00	160.00	10.00
140.00	160.00	12.00
140.00	160.00	15.00
145.00	160.00	9.00
145.00	160.00	15.00
150.00	165.00	9.00
150.00	170.00	12.00
150.00	170.00	15.00
150.00	175.00	15.00
150.00	180.00	18.00
155.00	175.00	15.00

These are some of the profiles mentioned above, we also manufacture as per customer's designs and specifications.

To order or get further details Email:sales@fitcoseals.com or Visit us www.fitcoseals.com



UHS/UNS

Piston/Rod Seals

FITCO®

UHS/UNS		
ID	OD	TH
160.00	175.00	9.00
160.00	175.00	16.00
160.00	180.00	12.00
160.00	180.00	15.00
160.00	185.00	16.00
165.00	180.00	9.00
165.00	190.00	15.00
170.00	190.00	12.00
170.00	190.00	15.00
170.00	195.00	16.00
170.00	200.00	15.00
170.00	200.00	18.00
175.00	200.00	18.00
175.00	200.00	15.00
180.00	200.00	18.00
180.00	200.00	12.00
180.00	200.00	12.50
180.00	200.00	15.00
180.00	205.00	15.00
190.00	210.00	12.00
190.00	210.00	15.00
190.00	215.00	16.00
195.00	215.00	12.00
200.00	220.00	12.00
200.00	220.00	15.00
200.00	225.00	15.00
200.00	225.00	16.00
204.00	224.00	12.00
210.00	230.00	13.00
210.00	230.00	16.00

UHS/UNS		
ID	OD	TH
210.00	235.00	18.00
212.00	237.00	19.00
220.00	240.00	16.00
220.00	245.00	18.00
224.00	249.00	19.00
225.00	250.00	12.00
230.00	250.00	12.00
230.00	250.00	15.00
230.00	255.00	19.00
230.00	255.00	19.00
230.00	260.00	18.00
230.00	261.00	19.00
240.00	260.00	12.00
240.00	265.00	18.00
250.00	270.00	12.00
250.00	275.00	19.00
250.00	280.00	18.00
260.00	280.00	18.00
260.00	290.00	18.00
265.00	295.00	19.00
270.00	300.00	19.00
275.00	310.00	15.00
280.00	300.00	15.00
280.00	310.00	19.00
290.00	320.00	18.00
300.00	330.00	18.00
300.00	340.00	20.00
305.00	320.00	18.00
310.00	340.00	22.00
320.00	350.00	20.00

These are some of the profiles mentioned above, we also manufacture as per customer's designs and specifications.

To order or get further details Email:sales@fitcoseals.com or Visit us www.fitcoseals.com



UHS/UNS

Piston/Rod Seals

FITCO®

UHS/UNS		
ID	OD	TH
330.00	360.00	20.00
330.00	360.00	22.00
340.00	370.00	22.00
345.00	365.00	14.00
350.00	380.00	22.00
355.00	385.00	22.00
360.00	390.00	22.00
370.00	400.00	22.00
400.00	430.00	19.00
400.00	430.00	22.00
420.00	450.00	19.00
420.00	450.00	19.00

These are some of the profiles mentioned above, we also manufacture as per customer's designs and specifications.

To order or get further details Email:sales@fitcoseals.com or Visit us www.fitcoseals.com



DAS

Compact Seals

FITCO®

Compact Piston Seal		
Size		
D	d	H
25.00	15.00	12.50
25.00	15.00	16.40
25.00	17.00	10.00
25.00	17.00	13.50
30.00	17.00	15.40
30.00	21.00	13.50
30.00	22.00	13.50
32.00	22.00	12.50
32.00	22.00	15.50
32.00	22.00	16.40
32.00	24.00	10.00
32.00	24.00	15.50
35.00	25.00	15.50
35.00	25.00	16.40
35.00	27.00	15.50
40.00	24.00	18.40
40.00	26.00	15.50
40.00	30.00	12.50
40.00	30.00	16.40
40.00	32.00	10.00
40.00	32.00	15.50
40.00	32.00	15.50
45.00	29.00	18.40
45.00	29.00	32.00
45.00	31.00	15.50
45.00	35.00	16.40
45.00	37.00	15.50
45.00	37.00	15.50
50.00	34.00	18.40
50.00	34.00	20.50

Compact Piston Seal		
Size		
D	d	H
50.00	34.00	32.00
50.00	35.00	20.00
50.00	38.00	20.50
50.00	40.00	12.50
50.80	34.92	19.05
55.00	39.00	18.40
55.00	39.00	20.50
55.00	40.00	32.00
55.00	43.00	20.50
60.00	44.00	18.40
60.00	44.00	20.50
60.00	44.00	32.00
60.00	48.00	20.50
60.00	48.00	20.50
63.00	47.00	18.40
63.00	47.00	19.40
63.00	47.00	20.50
63.00	47.00	32.00
63.00	48.00	20.00
63.00	51.00	20.50
63.00	53.00	12.50
63.50	47.62	19.05
65.00	49.00	20.50
65.00	49.00	32.00
65.00	50.00	18.40
65.00	53.00	20.50
70.00	50.00	22.40
70.00	50.00	35.00
70.00	54.00	20.50
70.00	55.00	20.00

These are some of the profiles mentioned above, we also manufacture as per customer's designs and specifications.

To order or get further details Email:sales@fitcoseals.com or Visit us www.fitcoseals.com



Compact Seals

FITCO®

DAS

Compact Piston Seal		
Size		
D	d	H
70.00	58.00	20.50
70.00	58.00	20.50
75.00	55.00	22.40
75.00	55.00	35.00
75.00	59.00	20.50
75.00	63.00	20.50
76.20	57.15	23.79
80.00	60.00	22.40
80.00	60.00	25.00
80.00	60.00	35.00
80.00	62.00	22.50
80.00	64.00	32.00
80.00	65.00	20.00
80.00	66.00	22.50
80.00	66.00	22.50
85.00	65.00	22.40
85.00	65.00	35.00
85.00	71.00	22.50
88.90	69.85	23.79
90.00	70.00	22.40
90.00	70.00	35.00
90.00	72.00	22.50
90.00	74.00	32.00
90.00	75.00	20.00
90.00	76.00	22.50
90.00	76.00	22.50
95.00	75.00	22.40
95.00	75.00	35.00
100.00	75.00	22.40
100.00	80.00	25.00

Compact Piston Seal		
Size		
D	d	H
100.00	80.00	35.00
100.00	82.00	22.50
100.00	85.00	20.00
100.00	86.00	22.50
101.60	82.55	23.79
105.00	80.00	22.40
110.00	85.00	22.40
110.00	85.00	45.00
110.00	90.00	35.00
110.00	92.00	22.50
110.00	96.00	22.50
115.00	90.00	22.40
115.00	90.00	45.00
115.00	97.00	22.50
120.00	95.00	22.40
120.00	95.00	45.00
120.00	100.00	35.00
120.00	106.00	22.50
120.00	106.00	22.50
125.00	100.00	25.40
125.00	100.00	32.00
125.00	100.00	45.00
125.00	103.00	26.50
125.00	105.00	25.00
125.00	105.00	25.40
125.00	108.00	26.50
125.00	108.00	26.50
127.00	101.60	32.15
130.00	105.00	25.40
130.00	105.00	45.00

These are some of the profiles mentioned above, we also manufacture as per customer's designs and specifications.

To order or get further details Email:sales@fitcoseals.com or Visit us www.fitcoseals.com



Compact Seals

FITCO®

Compact Piston Seal		
Size		
D	d	H
130.00	110.00	35.00
130.00	113.00	26.50
135.00	110.00	25.40
135.00	110.00	45.00
135.00	118.00	26.50
140.00	115.00	25.40
140.00	115.00	25.40
140.00	115.00	45.00
140.00	118.00	26.50
140.00	120.00	25.00
140.00	120.00	35.00
140.00	123.00	26.50
145.00	120.00	25.40
145.00	120.00	45.00
150.00	125.00	25.40
150.00	125.00	45.00
150.00	128.00	26.50
150.00	133.00	26.50
152.40	127.00	32.15
155.00	130.00	25.40
160.00	130.00	25.40
160.00	130.00	32.00
160.00	135.00	25.40
160.00	135.00	45.00
160.00	138.00	26.50
160.00	140.00	25.00
160.00	143.00	26.50
160.00	143.00	26.50
165.00	140.00	25.40

Compact Piston Seal		
Size		
D	d	H
170.00	140.00	45.00
170.00	145.00	25.40
175.00	150.00	25.40
177.80	152.40	32.15
180.00	150.00	35.40
180.00	150.00	36.00
180.00	155.00	25.40
180.00	155.00	45.00
180.00	158.00	26.50
180.00	163.00	26.50
185.00	160.00	25.40
185.00	160.00	45.00
190.00	165.00	25.40
190.00	165.00	45.00
195.00	170.00	25.40
200.00	170.00	35.40
200.00	170.00	36.00
200.00	175.00	25.40
200.00	175.00	31.50
200.00	175.00	45.00
200.00	180.00	31.50
210.00	185.00	25.40
210.00	185.00	45.00
220.00	190.00	35.40
220.00	195.00	25.40
220.00	195.00	45.00
220.00	200.00	31.50
225.00	200.00	25.40
225.00	200.00	31.50
230.00	205.00	25.40

These are some of the profiles mentioned above, we also manufacture as per customer's designs and specifications.

To order or get further details Email:sales@fitcoseals.com or Visit us www.fitcoseals.com



Compact Seals

FITCO®

Compact Piston Seal		
Size		
D	d	H
230.00	205.00	45.00
240.00	215.00	25.40
240.00	215.00	45.00
250.00	220.00	35.40
250.00	220.00	36.00
250.00	225.00	25.40
250.00	225.00	31.50
250.00	225.00	45.00
250.00	230.00	31.50
254.00	224.00	35.40
260.00	235.00	35.10
260.00	235.00	45.00
270.00	245.00	35.40
270.00	245.00	45.00
275.00	250.00	31.50
280.00	250.00	35.40
280.00	255.00	45.00
300.00	275.00	31.50
300.00	275.00	45.00
320.00	290.00	36.00
350.00	325.00	45.00

These are some of the profiles mentioned above, we also manufacture as per customer's designs and specifications.

To order or get further details Email:sales@fitcoseals.com or Visit us www.fitcoseals.com



DHS

Wiper Seals

FITCO®

DHS		
ID	OD	TH
11.20	19.20	6.00
12.00	20.00	6.00
14.00	22.00	6.00
16.00	24.00	6.00
18.00	26.00	6.00
20.00	28.00	6.00
22.40	30.40	6.00
23.50	31.50	6.00
25.00	33.00	6.00
28.00	36.00	6.00
30.00	38.00	6.50
31.50	39.50	6.50
32.00	40.00	6.50
35.50	43.50	6.50
38.00	44.00	6.50
38.00	46.00	6.50
40.00	48.00	6.50
45.00	53.00	6.50
50.00	58.00	6.50
53.00	61.00	6.50
55.00	63.00	6.50
55.00	65.00	8.00
56.00	64.00	6.50
60.00	68.00	6.50
63.00	71.00	6.50
65.00	73.00	6.50
67.00	75.00	6.50
70.00	80.00	8.00
71.00	81.00	8.00
75.00	85.00	8.00

DHS		
ID	OD	TH
80.00	90.00	8.00
85.00	95.00	8.00
90.00	100.00	8.00
95.00	105.00	8.00
98.00	108.00	8.00
100.00	112.00	11.00
100.00	115.00	8.50
105.00	115.00	8.00
110.00	120.00	8.00
112.00	122.00	8.00
115.00	125.00	8.00
120.00	130.00	8.00
125.00	138.00	9.50
130.00	140.00	9.50
136.00	149.00	9.50
140.00	153.00	9.50
145.00	158.00	9.50
150.00	164.00	9.50
160.00	174.00	9.50
165.00	179.00	9.50
170.00	184.00	9.50
180.00	194.00	9.50
200.00	214.00	9.50
204.00	218.00	9.50
212.00	226.00	9.50
220.00	233.00	9.50
230.00	244.00	9.50
250.00	264.00	9.50

These are some of the profiles mentioned above, we also manufacture as per customer's designs and specifications.

To order or get further details Email:sales@fitcoseals.com or Visit us www.fitcoseals.com



DKBI

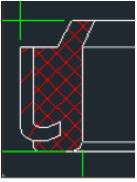
Wiper Seals

FITCO®

DKBI		
ID	OD	TH
25.00	37.00	6.0 / 9.0
28.00	42.00	6.0 / 9.0
30.00	42.00	6.0 / 9.0
32.00	44.00	7.0 / 11.0
32.00	52.00	8.0 / 11.0
35.00	47.00	7.0 / 11.0
40.00	52.00	7.0 / 11.0
45.00	57.00	7.0 / 11.0
50.00	62.00	7.0 / 11.0
55.00	69.00	8.0 / 11.0
60.00	74.00	8.0 / 11.0
63.00	77.00	8.0 / 11.0
65.00	79.00	8.0 / 11.0
70.00	84.00	8.0 / 11.0
75.00	89.00	8.0 / 11.0
80.00	94.00	8.0 / 11.0
85.00	99.00	8.0 / 11.0
90.00	104.00	8.0 / 11.0
95.00	109.00	8.0 / 11.0
100.00	114.00	8.0 / 11.0
105.00	121.00	9.0 / 12.0
110.00	126.00	9.0 / 12.0
115.00	131.00	9.0 / 12.0
120.00	136.00	9.0 / 12.0
130.00	146.00	9.0 / 12.0
140.00	160.00	10.0 / 14.0
150.00	170.00	10.0 / 14.0

These are some of the profiles mentioned above, we also manufacture as per customer's designs and specifications.

To order or get further details Email:sales@fitcoseals.com or Visit us www.fitcoseals.com



A5/J

Wiper Seals

FITCO®

ID	OD	TH
30.00	40.00	7.0 / 11.0
32.00	42.00	7.0 / 11.0
35.00	45.00	7.0 / 11.0
36.00	48.00	7.0 / 11.0
40.00	50.00	7.0 / 11.0
45.00	55.00	7.0 / 11.0
45.00	58.00	7.0 / 11.0
50.00	60.00	7.0 / 11.0
55.00	65.00	7.0 / 11.0
60.00	70.00	7.0 / 11.0
63.00	73.00	7.0 / 11.0
65.00	75.00	7.0 / 11.0
70.00	80.00	7.0 / 11.0
80.00	90.00	7.0 / 11.0
90.00	100.00	7.0 / 11.0
100.00	110.00	7.0 / 11.0
110.00	120.00	7.0 / 11.0

These are some of the profiles mentioned above, we also manufacture as per customer's designs and specifications.

To order or get further details Email:sales@fitcoseals.com or Visit us www.fitcoseals.com



A1/GHP

Wiper Seals

FITCO®

d	D	H	Height
12.00	20.00	4.00	7.00
16.00	24.00	4.00	7.00
18.00	26.00	4.00	7.00
20.00	28.00	4.00	7.00
22.00	30.00	4.00	7.00
25.00	33.00	4.00	7.00
28.00	36.00	4.00	7.00
30.00	38.00	4.00	7.00
32.00	40.00	4.00	7.00
35.00	43.00	4.00	7.00
36.00	44.00	4.00	7.00
40.00	48.00	4.00	7.00
45.00	53.00	4.00	7.00
50.00	58.00	4.00	7.00
55.00	63.00	4.00	7.00
56.00	64.00	4.00	7.00
60.00	68.00	4.00	7.00
63.00	71.00	4.00	7.00
65.00	73.00	4.00	7.00

d	D	H	Height
70.00	78.00	4.00	7.00
75.00	83.00	4.00	7.00
80.00	88.00	4.00	7.00
85.00	93.00	4.00	7.00
90.00	98.00	4.00	7.00
95.00	103.00	4.00	7.00
100.00	108.00	4.00	7.00
110.00	122.00	5.50	10.00
115.00	127.00	5.50	10.00
120.00	132.00	5.50	10.00
125.00	137.00	5.50	10.00
130.00	142.00	5.50	10.00
135.00	147.00	5.50	10.00
140.00	152.00	5.50	10.00
145.00	157.00	5.50	10.00
150.00	162.00	5.50	10.00
175.00	187.00	5.50	10.00
180.00	192.00	5.50	10.00
210.00	222.00	5.50	10.00

These are some of the profiles mentioned above, we also manufacture as per customer's designs and specifications.

To order or get further details Email:sales@fitcoseals.com or Visit us www.fitcoseals.com



UW 2

Wiper Seals

FITCO®

d	D	H	h
10.00	18.00	8.00	4.00
12.00	20.00	8.00	4.00
14.00	22.00	8.00	4.00
15.00	23.00	8.00	4.00
16.00	24.00	8.00	4.00
18.00	26.00	8.00	4.00
20.00	28.00	8.00	4.00
22.00	30.00	8.00	4.00
25.00	33.00	8.00	4.00
28.00	36.00	8.00	4.00
30.00	38.00	8.00	4.00
32.00	40.00	8.00	4.00
35.00	43.00	8.00	4.00
36.00	44.00	8.00	4.00
38.00	46.00	8.00	4.00
40.00	48.00	8.00	4.00
42.00	50.00	8.00	4.00
45.00	53.00	8.00	4.00
50.00	58.00	8.00	4.00
55.00	63.00	8.00	4.00
56.00	64.00	8.00	4.00
60.00	68.00	8.00	4.00
63.00	71.00	8.00	4.00

d	D	H	h
65.00	73.00	8.00	4.00
70.00	78.00	8.00	4.00
75.00	83.00	8.00	4.00
80.00	88.00	8.00	4.00
85.00	93.00	8.00	4.00
90.00	98.00	8.00	4.00
100.00	108.00	8.00	4.00
105.00	117.00	11.00	5.50
110.00	122.00	11.00	5.50
115.00	127.00	11.00	5.50
120.00	132.00	11.00	5.50
125.00	137.00	11.00	5.50
130.00	142.00	11.00	5.50
135.00	147.00	11.00	5.50
140.00	152.00	11.00	5.50
150.00	162.00	11.00	5.50
160.00	172.00	11.00	5.50
170.00	182.00	11.00	5.50
180.00	192.00	11.00	5.50
190.00	202.00	11.00	5.50
200.00	212.00	11.00	5.50
220.00	235.00	13.00	6.40

These are some of the profiles mentioned above, we also manufacture as per customer's designs and specifications.

To order or get further details Email:sales@fitcoseals.com or Visit us www.fitcoseals.com



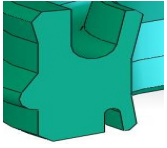
E4

Punematic Seals **FITCO®**

E4		
OD	ID	TH
32.00	24.00	5.50
40.00	30.00	7.00
50.00	40.00	7.00
63.00	53.00	7.00
80.00	68.00	8.50
100.00	88.00	8.50
125.00	110.00	10.00
150.00	135.00	10.00
160.00	145.00	10.00
200.00	180.00	14.00

These are some of the profiles mentioned above, we also manufacture as per customer's designs and specifications.

To order or get further details Email:sales@fitcoseals.com or Visit us www.fitcoseals.com



EU

Punematic Seals

FITCO®

EU		
ID	OD	TH
12.00	22.00	10.70
16.00	26.00	10.70
18.00	28.00	10.70
20.00	30.00	10.70
25.00	35.00	11.20
32.00	42.00	11.20
40.00	50.00	11.20
45.00	55.00	12.20
50.00	60.00	12.20

These are some of the profiles mentioned above, we also manufacture as per customer's designs and specifications.

To order or get further details Email:sales@fitcoseals.com or Visit us www.fitcoseals.com



PP

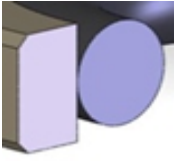
Punematic Seals

FITCO®

PP		
ID	OD	TH
12.00	20.00	5.50
14.00	22.00	7.80
16.00	24.00	7.80
20.00	28.00	7.80
25.00	33.00	7.80
28.00	36.00	7.80
30.00	38.00	7.80
30.00	40.00	7.80
32.00	42.00	7.80
36.00	46.00	7.80
40.00	50.00	7.80
50.00	60.00	7.80

These are some of the profiles mentioned above, we also manufacture as per customer's designs and specifications.

To order or get further details Email:sales@fitcoseals.com or Visit us www.fitcoseals.com



OE

Rod Seals

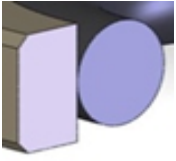
FITCO®

Size		
OD	ID	TH
20.00	12.50	3.20
25.00	17.50	3.20
25.00	14.00	4.20
28.00	20.50	3.20
30.00	22.50	3.20
30.00	19.00	4.20
32.00	24.50	3.20
32.00	21.00	4.20
35.00	24.00	3.20
35.00	24.00	4.20
36.00	25.00	4.20
38.00	30.50	3.20
38.00	27.00	4.20
40.00	32.50	3.20
40.00	29.00	4.20
42.00	31.00	4.20
45.00	37.50	3.20
45.00	34.00	4.20
48.00	37.00	4.20
50.00	42.50	3.20
50.00	39.00	4.20
50.00	34.50	6.30
52.00	41.00	4.20
55.00	44.00	4.20
55.00	39.50	6.30
56.00	40.50	6.30
60.00	49.00	4.20
60.00	44.50	6.30
63.00	52.00	4.20
63.00	47.50	6.30

Size		
OD	ID	TH
65.00	54.00	4.20
65.00	49.50	6.30
70.00	59.00	4.20
70.00	54.50	6.30
75.00	64.00	4.20
75.00	59.50	6.30
80.00	69.00	4.20
80.00	64.50	6.30
85.00	74.00	4.20
85.00	69.50	6.30
90.00	79.00	4.20
90.00	74.50	6.30
90.00	69.00	8.10
95.00	84.00	4.20
95.00	79.50	6.30
95.00	74.00	8.10
100.00	89.00	4.20
100.00	84.50	6.30
100.00	79.00	8.10
105.00	89.50	6.30
110.00	99.00	4.20
110.00	94.50	6.30
110.00	89.00	8.10
115.00	104.00	4.20
115.00	99.50	6.30
115.00	94.00	8.10
120.00	109.00	4.20
120.00	104.50	6.30
120.00	99.00	8.10
125.00	114.00	4.20

These are some of the profiles mentioned above, we also manufacture as per customer's designs and specifications.

To order or get further details Email:sales@fitcoseals.com or Visit us www.fitcoseals.com



OE

Rod Seals

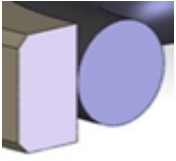
FITCO®

Size		
OD	ID	TH
125.00	109.50	6.30
125.00	104.00	8.10
130.00	114.50	6.30
130.00	109.00	8.10
135.00	119.50	6.30
135.00	114.00	8.10
140.00	124.50	6.30
140.00	119.00	8.10
145.00	124.00	8.10
150.00	134.50	6.30
150.00	129.00	8.10
155.00	134.00	8.10
160.00	144.50	6.30
160.00	139.00	8.10
165.00	149.50	6.30
165.00	144.00	8.10
170.00	154.50	6.30
170.00	149.00	8.10
175.00	159.50	6.30
175.00	154.00	8.10
180.00	164.50	6.30
180.00	159.00	8.10
185.00	164.00	8.10
190.00	174.50	6.30
190.00	169.00	8.10
195.00	174.00	8.10
200.00	184.50	6.30
200.00	179.00	8.10
205.00	184.00	8.10
210.00	189.00	8.10

Size		
OD	ID	TH
215.00	194.00	8.10
220.00	199.00	8.10
225.00	204.00	8.10
230.00	209.00	8.10
235.00	214.00	8.10
240.00	219.00	8.10
245.00	224.00	8.10
250.00	229.00	8.10
255.00	234.00	8.10
260.00	239.00	8.10
265.00	244.00	8.10
270.00	249.00	8.10
275.00	254.00	8.10
280.00	259.00	8.10
290.00	269.00	8.10
300.00	279.00	8.10
305.00	280.50	8.10
310.00	285.50	8.10
320.00	295.50	8.10
330.00	305.50	8.10
340.00	315.50	8.10
350.00	325.50	8.10
360.00	335.50	8.10
370.00	345.50	8.10
380.00	355.50	8.10
390.00	365.50	8.10
400.00	375.50	8.10
410.00	385.50	8.10
420.00	395.50	8.10
425.00	400.50	8.10

These are some of the profiles mentioned above, we also manufacture as per customer's designs and specifications.

To order or get further details Email:sales@fitcoseals.com or Visit us www.fitcoseals.com



OE

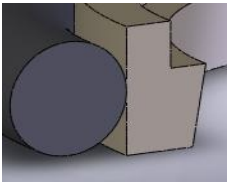
Rod Seals

FITCO®

Size		
OD	ID	TH
430.00	405.50	8.10
440.00	415.50	8.10
450.00	425.50	8.10
460.00	435.50	8.10
470.00	445.50	8.10
480.00	455.50	8.10
490.00	465.50	8.10
500.00	475.50	8.10
520.00	495.50	8.10
530.00	505.50	8.10
550.00	525.50	8.10
570.00	545.50	8.10
600.00	575.50	8.10
630.00	605.50	8.10
650.00	625.50	8.10
680.00	655.50	8.10

These are some of the profiles mentioned above, we also manufacture as per customer's designs and specifications.

To order or get further details Email:sales@fitcoseals.com or Visit us www.fitcoseals.com



OD

Rod Seals

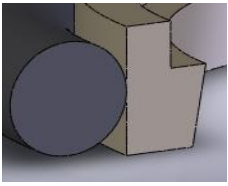
FITCO®

Size		
OD	ID	TH
6.00	11.80	2.20
10.00	14.90	2.20
12.00	16.90	2.20
12.00	19.30	3.20
14.00	21.30	3.20
16.00	23.30	3.20
18.00	25.30	3.20
20.00	27.30	3.20
20.00	30.70	4.20
22.00	29.30	3.20
22.00	32.70	4.20
25.00	32.30	3.20
25.00	35.70	4.20
28.00	35.20	3.20
28.00	38.70	4.20
30.00	37.20	3.20
30.00	40.70	4.20
32.00	39.30	3.20
32.00	42.70	4.20
35.00	42.30	3.20
35.00	45.70	4.20
36.00	43.30	3.20
36.00	46.70	4.20
38.00	48.70	4.20
38.00	53.10	6.30
40.00	47.30	3.20
40.00	50.70	4.20
40.00	55.10	6.30
45.00	52.30	3.20
45.00	55.70	4.20

Size		
OD	ID	TH
45.00	60.10	6.30
50.00	60.70	4.20
50.00	65.10	6.30
55.00	65.70	4.20
55.00	70.10	6.30
56.00	66.70	4.20
56.00	71.10	6.30
60.00	70.70	4.20
60.00	75.10	6.30
63.00	73.70	4.20
63.00	78.10	6.30
65.00	80.10	6.30
70.00	85.10	6.30
75.00	90.10	6.30
80.00	95.10	6.30
85.00	100.10	6.30
90.00	105.10	6.30
95.00	110.10	6.30
100.00	115.10	6.30
100.00	120.50	8.10
105.00	120.10	6.30
110.00	125.10	6.30
110.00	130.50	8.10
115.00	130.10	6.30
115.00	135.50	8.10
120.00	135.10	6.30
120.00	140.50	8.10
125.00	140.10	6.30
125.00	145.50	8.10
135.00	150.10	6.30

These are some of the profiles mentioned above, we also manufacture as per customer's designs and specifications.

To order or get further details Email:sales@fitcoseals.com or Visit us www.fitcoseals.com



OD

Rod Seals

FITCO®

Size		
OD	ID	TH
140.00	155.10	6.30
140.00	160.50	8.10
145.00	160.10	6.30
150.00	165.10	6.30
150.00	170.50	8.10
160.00	175.10	6.30
160.00	180.50	8.10
165.00	180.10	6.30
170.00	185.10	6.30
170.00	190.50	8.10
175.00	190.10	6.30
175.00	195.50	8.10
180.00	195.10	6.30
180.00	200.50	8.10
190.00	205.10	6.30
190.00	210.50	8.10
200.00	220.50	8.10
210.00	230.50	8.10
220.00	240.50	8.10
225.00	245.50	8.10
230.00	250.50	8.10
240.00	260.50	8.10
250.00	270.50	8.10
260.00	284.00	8.10
270.00	294.00	8.10
280.00	304.00	8.10
290.00	314.00	8.10
300.00	324.00	8.10
330.00	354.00	8.10

Size		
OD	ID	TH
350.00	374.00	8.10
360.00	384.00	8.10
370.00	394.00	8.10
380.00	404.00	8.10
400.00	424.00	8.10
430.00	454.00	8.10
450.00	474.00	8.10
480.00	504.00	8.10
500.00	525.00	8.10
510.00	535.00	8.10
520.00	541.00	8.10
520.00	544.00	8.10
540.00	564.00	8.10
550.00	574.00	8.10
560.00	584.00	8.10
600.00	624.00	8.10
700.00	724.00	8.10

These are some of the profiles mentioned above, we also manufacture as per customer's designs and specifications.

To order or get further details Email:sales@fitcoseals.com or Visit us www.fitcoseals.com



PTFE GUIDE STRIPS

F3/Bronze*GS

Guide Strip

FITCO®

PTFE Bronze Strip : Fitco - Colour Brown

Groove Width	Strip Width	Strip Thickness
4.10	4.00	1.50
5.10	5.00	1.50
5.70	5.60	1.50
6.30	6.00	1.50
8.10	8.00	1.50
9.70	9.50	1.50
9.70	9.50	1.70
4.10	2.00	2.00
5.70	5.60	2.00
6.30	6.00	2.00
8.10	8.00	2.00
9.70	9.50	2.00
12.00	11.80	2.00
12.70	12.50	2.00
15.00	14.80	2.00
20.00	19.80	2.00
5.70	5.60	2.50
6.30	6.00	2.50
8.10	8.00	2.50
9.70	9.50	2.50
12.00	11.80	2.50
12.70	12.50	2.50
15.00	14.80	2.50
18.00	17.80	2.50

Groove Width	Strip Width	Strip Thickness
20.00	19.80	2.50
25.00	24.80	2.50
30.00	29.80	2.50
35.00	34.80	2.50
40.00	39.80	2.50
45.00	44.80	2.50
50.00	49.80	2.50
6.30	6.00	3.00
8.10	8.00	3.00
9.70	9.50	3.00
12.00	11.80	3.00
15.00	14.80	3.00
18.00	17.80	3.00
20.00	19.80	3.00
25.00	24.80	3.00
30.00	29.80	3.00
35.00	34.80	3.00
40.00	39.80	3.00
45.00	44.80	3.00
50.00	49.80	3.00
9.53	9.33	3.17
12.70	12.50	3.17
15.88	15.68	3.17
19.05	18.85	3.17

These are some of the profiles mentioned above, we also manufacture as per customer's designs and specifications.

To order or get further details Email:sales@fitcoseals.com or Visit us www.fitcoseals.com



PTFE GUIDE STRIPS

F3/Bronze*GS

Guide Strip

FITCO®

PTFE Bronze Strip : Fitco- Colour Brown

Groove Width	Strip Width	Strip Thickness
25.40	25.20	3.17
4.10	4.00	4.00
6.30	6.00	4.00
8.10	8.00	4.00
9.70	9.50	4.00
15.00	14.80	4.00
20.00	19.80	4.00
25.00	24.80	4.00
30.00	29.80	4.00
35.00	34.80	4.00
40.00	39.80	4.00
45.00	44.80	4.00

PTFE Bronze Strip with Groove

Groove Width	Strip Width	Strip Thickness
5.70	5.50	2.50
9.70	9.50	2.50
15.00	14.80	2.50
20.00	19.80	2.50
25.00	24.80	2.50

These are some of the profiles mentioned above, we also manufacture as per customer's designs and specifications.

To order or get further details Email:sales@fitcoseals.com or Visit us www.fitcoseals.com



FC/Phenolic*GS

Guide Strip

FITCO®

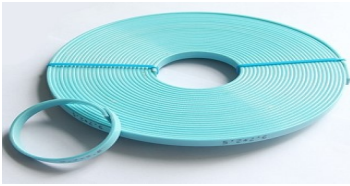
Hard Strip - Green Color

Groove Width	Strip Width	Strip Thickness
9.70	9.50	2.00
15.00	14.80	2.00
20.00	19.80	2.00
25.00	24.80	2.00
5.70	5.60	2.50
8.10	8.00	2.50
9.70	9.50	2.50
12.00	11.80	2.50
15.00	14.80	2.50
18.00	17.80	2.50
20.00	19.80	2.50
25.00	24.80	2.50
30.00	29.80	2.50
8.10	8.00	3.00
9.70	9.50	3.00
12.00	11.80	3.00
15.00	14.80	3.00
20.00	19.80	3.00
25.00	24.80	3.00
30.00	29.80	3.00
9.52	9.50	3.18
12.70	12.50	3.18
15.87	15.67	3.18
19.05	18.85	3.18
25.40	25.20	3.18

Groove Width	Strip Width	Strip Thickness
6.10	6.00	4.00
8.10	8.00	4.00
9.70	9.50	4.00
15.00	14.80	4.00
20.00	19.80	4.00
25.00	24.80	4.00
30.00	29.80	5.00

These are some of the profiles mentioned above, we also manufacture as per customer's designs and specifications.

To order or get further details Email:sales@fitcoseals.com or Visit us www.fitcoseals.com



FC/Phenolic*GS

Guide Strip

FITCO®

Hard Strip - Red Color

Groove Width	Strip Width	Strip Thickness
5.70	5.60	2.50
9.70	9.50	2.50
15.00	14.80	2.50
20.00	19.80	2.50
25.00	24.80	2.50
30.00	29.80	2.50

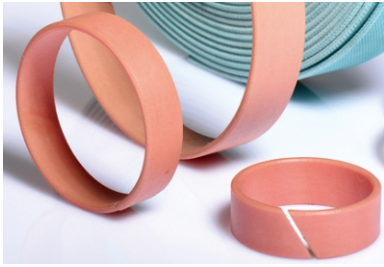


Spiral Strip (Red Color)

Groove Width	Strip Width	Strip Thickness
9.70	9.50	2.50
15.00	14.80	2.50
20.00	19.80	2.50
25.00	24.80	2.50

These are some of the profiles mentioned above, we also manufacture as per customer's designs and specifications.

To order or get further details Email:sales@fitcoseals.com or Visit us www.fitcoseals.com



Phenolic*GR

Guide Strip

FITCO®

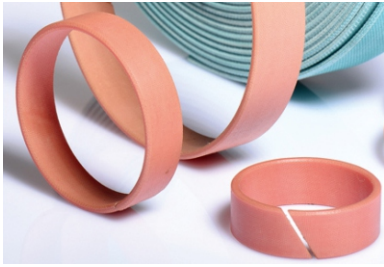
Wear Ring : Phenolic with fabric

ID	OD	TH
50.00	56.00	5.80
59.00	65.00	5.80
69.00	75.00	5.80
74.00	80.00	5.80
79.00	85.00	5.80
84.00	90.00	5.80
90.00	95.00	5.80
95.00	100.00	5.80
100.00	105.00	5.80
106.00	110.00	5.80
110.00	115.00	5.80
121.00	130.00	5.80
126.00	135.00	5.80
65.00	70.00	6.80
75.00	80.00	7.80
80.00	85.00	7.80
110.00	115.00	7.80
115.00	120.00	7.80
125.00	130.00	7.80
130.00	135.00	7.80
135.00	140.00	7.80
45.00	50.00	9.50
58.00	63.00	9.50
65.00	70.00	9.50
70.00	75.00	9.50
75.00	80.00	9.50
80.00	85.00	9.50
85.00	90.00	9.50
95.00	100.00	9.50
105.00	110.00	9.50
111.00	120.00	9.50
115.00	120.00	9.50
120.00	125.00	9.50
125.00	135.00	9.50

ID	OD	TH
130.00	135.00	9.50
135.00	140.00	9.50
153.00	160.00	9.50
138.00	150.00	12.30
43.30	50.00	12.50
83.30	90.00	12.50
93.30	100.00	12.50
98.30	105.00	12.50
103.30	110.00	12.50
113.30	120.00	12.50
123.30	130.00	12.50
128.00	140.00	12.50
65.00	70.00	14.80
70.00	75.00	14.80
75.00	80.00	14.80
80.00	85.00	14.80
85.00	90.00	14.80
90.00	95.00	14.80
95.00	100.00	14.80
105.00	110.00	14.80
106.00	115.00	14.80
110.00	115.00	14.80
111.00	120.00	14.80
115.00	120.00	14.80
115.00	125.00	14.80
120.00	125.00	14.80
125.00	135.00	14.80
130.00	140.00	14.80
135.00	140.00	14.80
148.00	160.00	14.80
56.30	63.00	16.50
93.30	100.00	16.50
98.30	105.00	16.50
103.30	110.00	16.50
108.30	115.00	16.50

These are some of the profiles mentioned above, we also manufacture as per customer's designs and specifications.

To order or get further details Email:sales@fitcoseals.com or Visit us www.fitcoseals.com



Phenolic*GR

Guide Strip

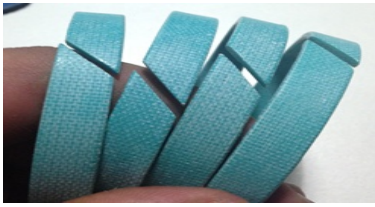
FITCO®

Wear Ring : Phenolic with fabric

ID	OD	TH
118.30	125.00	16.50
123.30	130.00	16.50
128.30	135.00	16.50
133.30	140.00	16.50
138.30	145.00	16.50
143.40	150.00	16.50
158.00	170.00	17.40
63.00	68.00	19.80
83.30	90.00	19.80
98.60	105.00	19.80
128.60	135.00	19.80
138.60	145.00	19.80
143.40	150.00	19.80
55.00	60.00	24.80
63.30	70.00	24.80
73.30	80.00	24.80
75.00	80.00	24.80
78.30	85.00	24.80
83.30	90.00	24.80
108.30	115.00	24.80
123.30	130.00	24.80
128.60	135.00	24.80
40.00	44.00	29.80
50.00	55.00	29.80
80.00	85.00	29.80
85.00	90.00	29.80

These are some of the profiles mentioned above, we also manufacture as per customer's designs and specifications.

To order or get further details Email:sales@fitcoseals.com or Visit us www.fitcoseals.com



Polyster/PTFE*GR

Guide Strip

FITCO®

Wear Ring : Synthetic fibre reinforced polyester composite with PTFE

ID	OD	TH
60.00	65.00	8.50
20.00	25.00	9.50
25.00	30.00	9.50
28.00	33.00	9.50
30.00	35.00	9.50
35.00	40.00	9.50
36.00	41.00	9.50
40.00	45.00	9.50
45.00	50.00	9.50
50.00	55.00	9.50
55.00	60.00	9.50
56.00	61.00	9.50
58.00	63.00	9.50
60.00	65.00	9.50
63.00	68.00	9.50
65.00	70.00	9.50
70.00	75.00	9.50
75.00	80.00	9.50
80.00	85.00	9.50
85.00	90.00	9.50
90.00	95.00	9.50
95.00	100.00	9.50
100.00	105.00	9.50
120.00	125.00	9.50
135.00	140.00	9.50
30.00	35.00	14.80
35.00	40.00	14.80
40.00	45.00	14.80

ID	OD	TH
45.00	50.00	14.80
50.00	55.00	14.80
55.00	60.00	14.80
60.00	65.00	14.80
63.00	68.00	14.80
65.00	70.00	14.80
70.00	75.00	14.80
75.00	80.00	14.80
80.00	85.00	14.80
85.00	90.00	14.80
90.00	95.00	14.80
95.00	100.00	14.80
100.00	105.00	14.80
105.00	110.00	14.80
110.00	115.00	14.80
115.00	120.00	14.80
120.00	125.00	14.80
125.00	130.00	14.80
130.00	135.00	14.80
135.00	140.00	14.80
140.00	145.00	14.80
145.00	150.00	14.80
150.00	155.00	14.80
155.00	160.00	14.80
160.00	165.00	14.80
192.00	200.00	14.80
242.00	250.00	14.80
172.00	180.00	19.80

These are some of the profiles mentioned above, we also manufacture as per customer's designs and specifications.

To order or get further details Email:sales@fitcoseals.com or Visit us www.fitcoseals.com



Hydraulic Seals

FITCO®

We provide large inventory of Seals and O Rings to satisfy our customer requirements.

FITCO specialises in O Rings , Oil Seals , Hydraulic Seals , Sealing Elements and are catering to diverse industrial requirements.

FITCO Manufactures over 90 standard profiles, however our range is continually expanding, special shapes and sizes are manufactured as per your specifications.



Quality Policy

Continuous commitment to achieve customer satisfaction by supplying quality products, remaining cost effective. To continually improve FITCO by adoption of best technology options, by involving the employees & organization as a whole. QMS as a team are committed to our customer's success & prosperity.

Shelf life of Elastomer

The shelf life of seals depends to a large extent on the polymer type.

- EPDM - 8 years
- PTFE unlimited
- CRNBR, - 6 years
- FKMVMQ, - 10 years
- AUTFE, /P, Thermoplastics - 4 years

Extension of the shelf life is possible by a checkup after the above periods.

Seals are often stored for longer time periods, wrong storage conditions may change the physical properties of elastomers, like hardening, softening, crack initiation, breakage or other degradation they can become unusable.

Material deterioration is due to certain factors such as deformation, high temperatures, contact with oxygen, ozone, light, humidity or other media.



An ISO 9001 Registered Company

FITCO®

Fitco Engineers Pvt Ltd

Our Locations

Mumbai:

- 403, Roha Orion, 16th Road,
Bandra (West), Mumbai 400050, India
Tel : +91-22-26050727, 26050737
Email : sales@fitcoseals.com

Chandigarh:

- 546, Phase-, Industrial Area, IX
Sector-66, S.A.S. Nagar, Mohali
(Near Chandigarh) -160062, India.

- S.C.F. 39, Phase V, Ground Floor,
Sector-59, S.A.S. Nagar, Mohali
(Near Chandigarh) -160059, India.
Tel : +91-172-2271588 , 2265811
Email : seals@fitcoseals.com

For Requirement of O Rings & Oil Seals

Visit us : www.fitcoseals.com

To order or get further details Email: sales@fitcoseals.com